

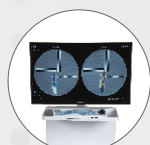


## MOBILE C - ARM IMAGING SYSTEM

### SURGIX

#### Features

- Ergonomic Design
- High Resolution 1K X 1K
- Smooth Movement
- Actuator Assisted Movement
- PC Based Memory
- Linux Operating System
- Multiple Monitor Option



27" Monitor



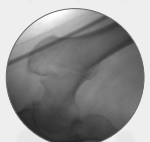
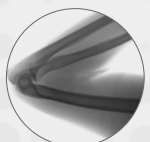
9" Image Intensifier



Stationary / Rotating Tube



Keyboard



RADIOLOGY



MONITORING



ANAESTHESIA



VENTILATION



SURGERY



VETERINARY



MEDICAL GASES



MOBILE HEALTHCARE

# MOBILE 'C' ARM IMAGING SYSTEM

SURGIX



## TECHNICAL SPECIFICATIONS : Surgix Mobile C-Arm System

System Specification		
Models	Surgix - HD	Surgix R - HD
Generator Output	3.5 kW	6 kW
Type	High Frequency, 100 KHz	
Fluoroscopy Modes	Manual Fluoroscopy, Pediatric Mode, Boost/High Dose Fluoroscopy, Obese Mode, Auto Mode, Pulse Mode	
Fluoroscopy mA Range	0.3mA to 8 mA	0.3mA to 12 mA
Fluoroscopy Timer	Cumulative Digital timer 5min (300 Secs)	
Radiography Mode	0.2 to 200 mAs	
KV Range	40 to 110 kV	40 to 120 kV

X-Ray Tube		
Anode Type	Stationary	Rotating
Focal spot	0.6mm/1.5mm	0.3mm/0.6mm

Control Panel	
Keyboard	Feather Touch keypad with various controls on C-Arm. Alpha Numeric keyboard on trolley.
Digital Display	Large Backlit LCD Display, displays operating modes, parameters, errors

C-Arm Stand	
Focus to I.I. Distance	900 mm
Up-Down Travel	430 mm, Motorized
Horizontal Travel	220 mm.
Orbital Range	120 Deg. (-30 deg to +90 deg)
Panning Movement	± 12.5 Deg.
Dept of C-Arc	630 mm
Free Space between I.I. & X-Ray Tube	780 mm.
Locking	Manual Locking for horizontal, Panning & orbital Movement accessible for both sides
Steering	2 separate steering for operating front & back wheels. Acts as locking for complete machine.
Input Power Supply	Single Phase, 220V, 15Amps 50Hz + 10%
Accessories	Lead Aprons-1 no. *Optional (Thyroid, Gonad, Goggles, UPS)

Image Processing & Storage System		
Image Intensifier	9" Triple field Canon, Japan of 9"/6"/4.5".	
	Lite	Advance
Camera	1k x 1k high resolution CCD/ CMOS Digital Camera	
Imaging Processor	PC & Software(Linux OS)	
Image Processing	Contrast Enhancement Edge Enhancement Zoom, Noise Reduction Recursive Filter Image Rotation & V/H Flip Image Reversal Last Image Hold	Contrast Enhancement Edge Enhancement Zoom, Noise Reduction. Recursive Filter Image Rotation & V/H Flip Image Reversal Last Image Hold Anatomical Body Parts Selection Anatomical Presets
Image Storage	1,00,000 Images	1,00,000 Images Cineloop Storage
Control Option	Software integrated control for imaging parameters both from software & C-Arm Console Panel.	
Cine Loop Storage	N.A.	Yes with Storage
Image Send Options	USB stick	LAN, USB stick, DICOM send
Print Composer	N.A.	Yes, DICOM Paper Printer (Printer Optional)
Advance Modes	N.A.	DSA (Digital Subtraction Angiography) (*Optional)
Monitor	27" High Definition Monitor with Split Screen	27" High Definition Monitor 27" Medical Grade Monitor (Optional) 19"- 2 nos. Medical Grade Monitor (Optional)
Regulatory/Safety Requirement	ISO 13485, ICMED, BIS Approved, AERB Approved, IEC-60601	
Laser Centering Device	Optional	

\*Specifications, design and / or accessories listed in the catalogue subject to change without prior notice

MANUFACTURED & SERVICED BY

**MEDION HEALTHCARE PVT. LTD.**

Plot No K-49, Opp. A-Solution Co. & Power House, Thakurpada Gaon, Additional MIDC, Anand Nagar, Ambarnath (E) – 421506. Dist. Thane, Maharashtra, INDIA

Tel.: 91 74100 26561 / 62. Email: sales@medion.co.in

Website: www.medion.co.in

REPRESENTED BY:

**MEDI+ON**  
Healthcare

Formerly: Meditronics sales & service Pvt. Ltd.